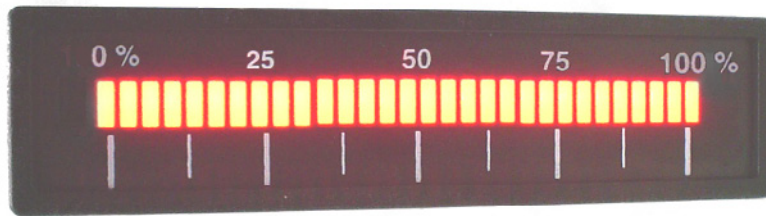
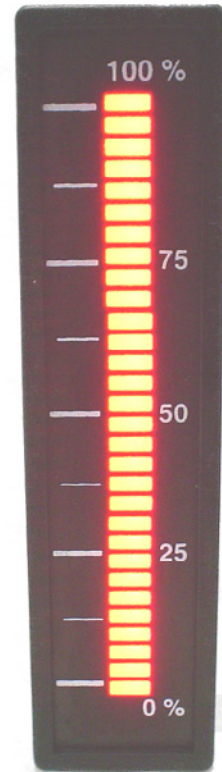


Series X-BAR

Bar Meters 96x24 mm



E-BAR-01-R-H



E-BAR-01-R-V

Model E-BAR-01	signals 0/10 Vdc and zero to the left
Model E-BAR-30	signals 4/20 mA and zero to the left
Model C-BAR-01	signals ± 10 Vdc and centered zero

Bar meters for process signals in mA and Vdc, active monopolar and bipolar. Display made of 30 segment leds, with control for luminosity by rear side potentiometer. Span and Offset adjustment by rear side potentiometers. Powered 18 to 30 Vdc non isolated. Format panel mount 96 x 24 mm.

Series X-BAR

Bar meters 96x24 mm for process signals

Panel mount meters with bar format display, for process signals in mA and Vdc, monopolar and bipolar depending on the model. Excitation voltage is not included on the instrument.

Housing for panel mount in format 96x24 mm. Connections by plug-in screw terminals.

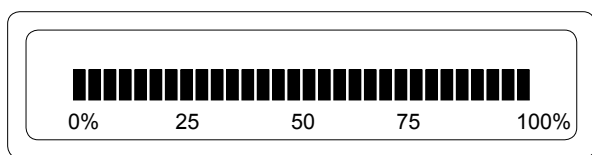
Display with 30 segments with visualization options from 0 to 100% (models E-BAR) or visualization centered "100% 0% 100%" (models C-BAR). Display brightness is adjustable by potentiometer accessible at the back of the instrument. Span and offset control by potentiometers at the back of the instrument. Instruments powered 18 to 30 Vdc non isolated.

E-BAR is for monopolar signals and the display is formatted from 0% to 100%. C-BAR is for bipolar signals $\pm 10Vdc$ and the display is formatted to be centered at 0%. For 0V signal only the central segment at 0% is lightening. For +10V signals the segments are lightened from 0% to 100% to the right of the central segment. For -10V signal the segments are lightened from 0% to 100% to the left of the central segment.

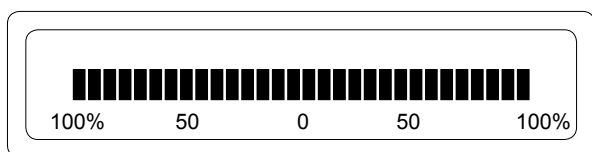
Order Reference

Model	Series	Power	Led Color	Mounting
E	BAR	6	R	V
E (E-BAR) C (C-BAR)		-6 (18-30 Vdc)	-R (red) -G (green)	-V (vertical) -H (horizontal)

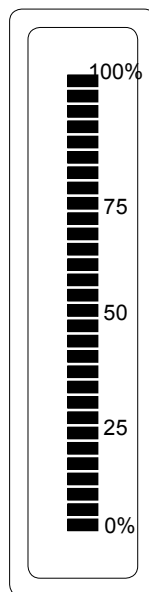
Front View



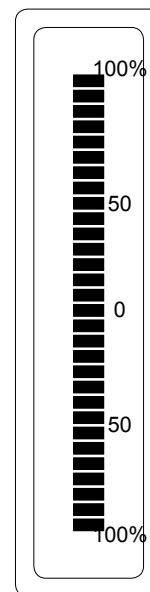
Frontal View E-BAR Horizontal



Front View C-BAR Horizontal



Frontal View E-BAR Vertical



Front View C-BAR Vertical

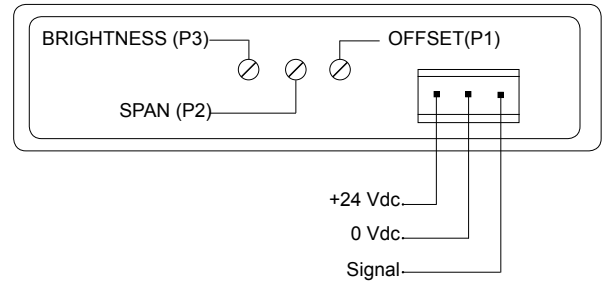
Technical Data

Display	30 segments
Color	Red or green
Signals	Active, 2 wire
E-BAR-01	0/10 Vdc
E-BAR-30	4/20 mA and 0/20 mA
C-BAR-01	±10Vdc
Accuracy	±1 segment
Input impedances	
E-BAR-01	100 KOhm
E-BAR-30	100 Ohm
C-BAR-01	100 KOhm
Power	18 to 30 Vdc non isolated
Consumption	30 mA (minimum brightness) 80 mA (maximum red brightness) 105 mA (maximum green brightness)
Configuration	span and offset potentiometers at the back of the instrument
Brightness control	potentiometer at the back
Span range	±5 segments
Offset range	±5 segments
Mounting	panel
Connections	plug-in screw clamp
Weight	<100 grams
Housing material	ABS, Polycarbonate
Front size	96 x 24 mm
Panel cut-out	92.5 x 21.5 mm
Deep	70 mm (including terminals)
Temp. operation	from 0 to 50°C
Temp. storage	from -20 to +85°C
Warm-up	15 minutes

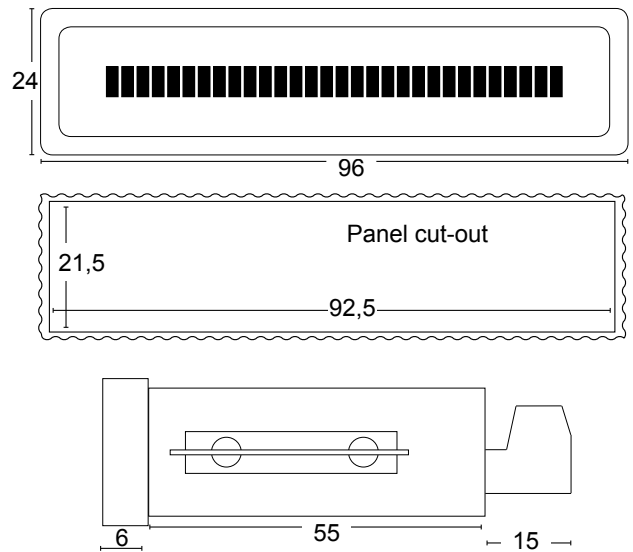
Precautions on installation

The instrument complies with security rule 61010-1, to be used on industrial environments. Installation must be performed by qualified personnel. Disconnect power before starting any maintenance and/or installation activities. The instrument does not have a general switch and will start operation as soon as power is connected. The instrument does not have protection fuse, the fuse must be added during installation. Recommended value for the fuse is 150mA. The instrument is to be panel mounted. Appropriate ventilation of the instrument must be assured. Do not expose the instrument to excess of humidity. Maintain clean by using a humid rag and do NOT use abrasive products such as alcohols, solvents, etc. General recommendations for electrical installations apply, and for proper functionality it is recommended to install the instrument far from electrical noise or magnetic field generators such as power relays, electrical motors, speed variators, ... If possible, do not install along the same conduits power cables (power, motor controllers, electrovalves, ...) together with signal and/or control cables. Before proceeding to the power connection, verify that the voltage level available matches the power levels indicated in the label on the instrument. In case of fire, disconnect the instrument from the power line, fire alarm according to local rules, disconnect the air conditioning, attack fire with carbonic snow, never with water.

Connections



Mechanical Dimensions (mm)



CE Declaration of Conformity

Manufacturer FEMA ELECTRÓNICA, S.A.
Pol. Ind. Santiga - Altimira 14
E-08210 - Barberà del Vallés - BARCELONA
ESPAÑA - SPAIN
www.fema.es - info@fema.es

Products - E-BAR-01, E-BAR-30, C-BAR-01

The manufacturer declares that the instruments indicated comply with the directives and rules indicated below.
European Directive for Low Voltage D73/23/CEE amended by D93/68/CEE
Electrotechnical Regulation for Low Voltage (RBT) ITC21, ITC29, ITC35.
European Directive for Electromagnetic Compatibility D89/336/CEE amended by D93/68/CEE

Safety 61010-1 (1996)
Emission 50081-1 (1994)
Immunity 50082-1 (1998)

Barberà del Vallés October 2001
Daniel Juncà - Quality Manager

other products



Panel Meters
Standard 96x48



Panel Meters
Small 72x36 mm



Panel Meters
Miniature 48x24 mm



Large Displays
60 & 100 mm digit



Signal Converters
& Isolators



Panel Meters
Standard 96x48mm

www.fema.es

ELECTRONIC INSTRUMENTATION FOR INDUSTRY

FEMA ELECTRÓNICA, S.A.
Pol. Ind. Santiga - Altimira 14
E-08210 Barberà del Vallès- BARCELONA
ESPAÑA - SPAIN

Tel. (+34) 93.729.6004 - www.fema.es
Fax (+34) 93.729.6003 - info@fema.es